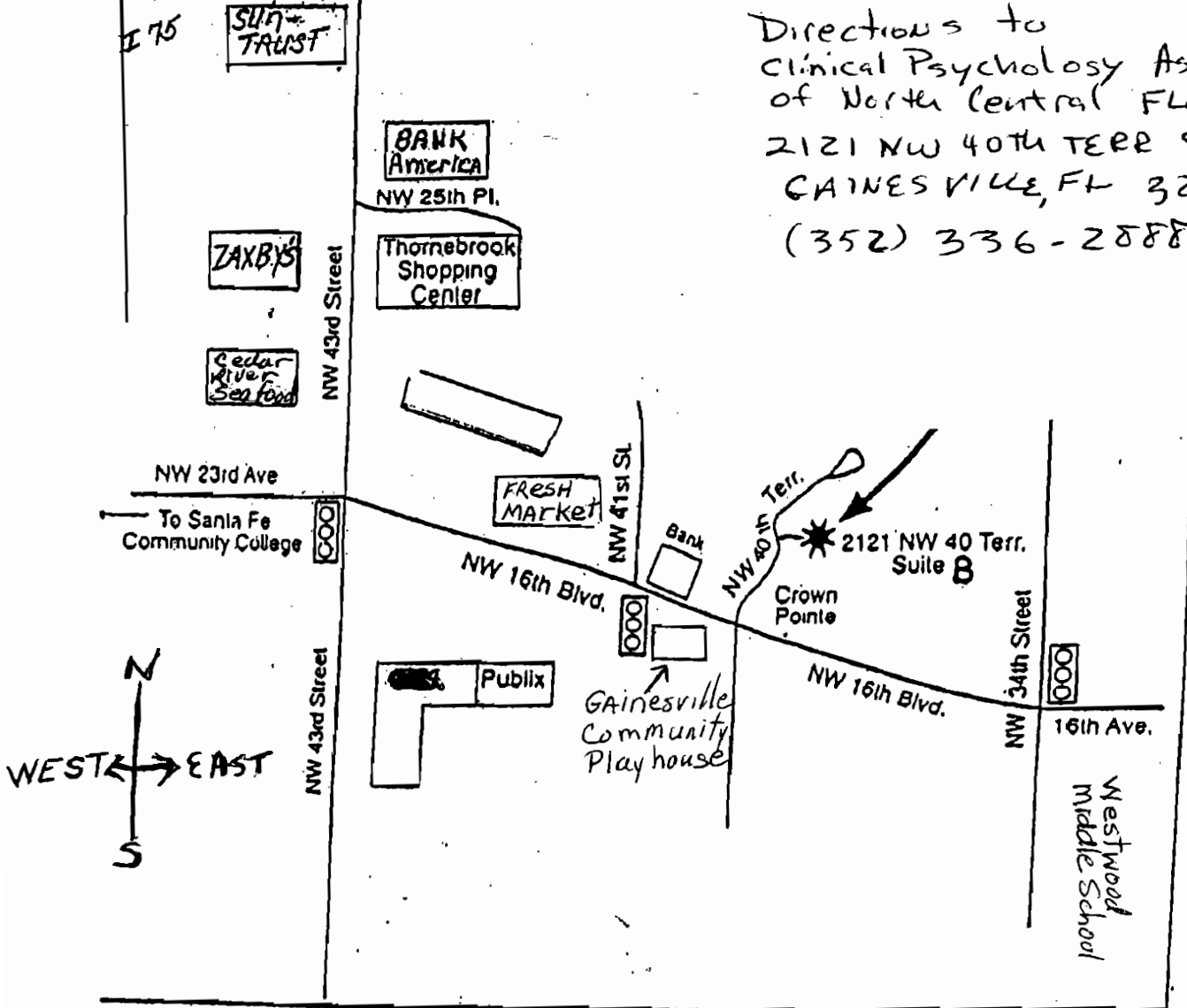


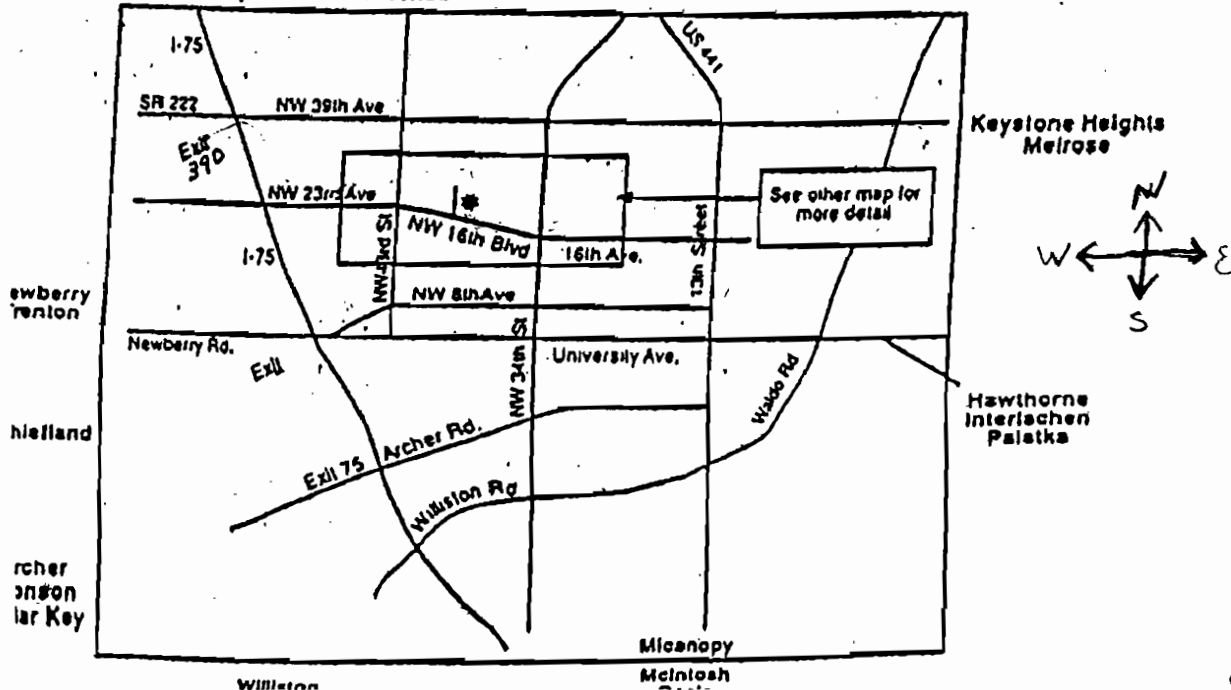
NORTH

EXIT 390 SR 222 (Also known as 39 Ave.)

Directions to
 Clinical Psychology Associates
 of North Central FLORIDA
 2121 NW 40th TERR Ste B
 GAINESVILLE, FL 32605
 (352) 336-2888



Live Oak Lake City High Springs Alachua Starke Waldo



Driving Directions

Going East on 39th Ave. Turn South(right) onto NW 43rd Street. Continue on 43rd Street until you reach NW 16th blvd(3rd red light). Turn East (left) onto 16th Blvd. stay on 16th Blvd. until you reach 40th Terrace,(2nd road on your left) turn North (left) into Crown Point office park. We are the 2nd drive on the right in suite B.

Going West on 39th Ave. turn South(left)) onto NW 43rd Street. Continue on 43rd Street until you reach NW 16th Blvd(3rd red light). Turn East (left) onto 16th Blvd. stay on 16th Blvd. until you reach NW 40th Terrace,(2nd road to left) turn North(left) into Crown Point office park. We are the 2nd drive on the right in suite B.